

2. HOW TO UPDATE MAIN FIRMWARE VIA USB FLASH DRIVE

2-1. USB FLASH DRIVE

Use the USB flash drive which supports the following standard.

- Format : FAT32
- USB : 2.0/1.1

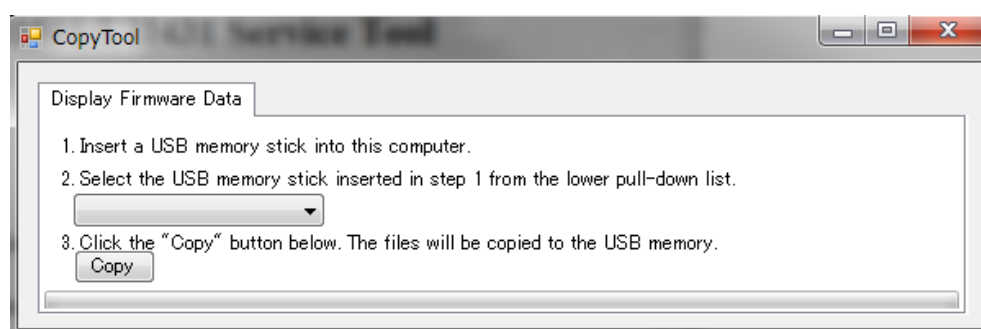
<Caution>

- Set the proper volume label name.
- It does not correspond to SD card reader.
- It does not correspond to USB HUB
- Do not use the USB Flash Drive enciphered

(*) The USB flash drive should be emptied beforehand.

2-2. UPDATE ALL FIRMWARES VIA USB FLASH DRIVE

- 1) Click [Create Usb Drive] button of the Service Tool Launcher.
- 2) Insert the USB flash drive into the PC and select the USB flash drive from the pull down list. Then, click "Copy".



Copy the update file under the root of the USB flash drive.

ex.) root

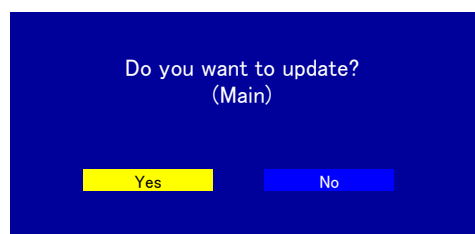
- 2K18_SHARP_PN_UH_MODEL_USA_MSD91H_MULTI_PANEL_V*.**.bin
- 2K18_TPV_SHARP_PD_TV_PCB_W7500_V*.**.bin
- 2K18_TPV_SHARP_PD_MST7484_FRC_V*.**.bin

- 3) Insert the USB flash drive to the monitor.
- 4) Turn on the monitor.

Updating the firmware is executed automatically.

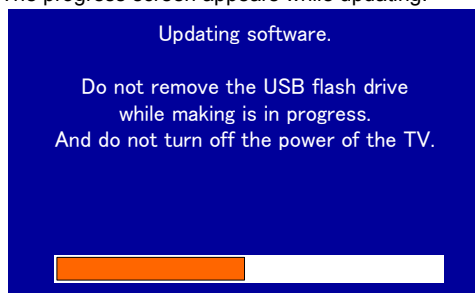
* If turn on/off the main power of the monitor inserting the USB flash drive, same updating is executed.

- 5) The monitor detects the target file and displays the confirmation screen.



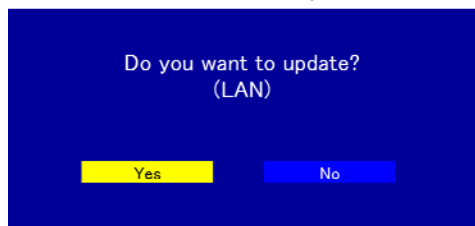
- 6) If move the focus onto "Yes" and press "ENTER" button, then updating will start.
And then if select "No", the confirmation screen disappears.

7) The progress screen appears while updating.



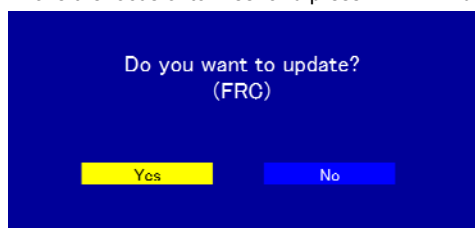
8) After complete updating the main firmware, the monitor displays the confirmation screen of updating LAN firmware.

If move the focus onto "Yes" and press "ENTER" button, then updating will start.



9) (Only PN-UH861) After complete updating the LAN firmware, the monitor displays the confirmation screen of updating FRC firmware.

If move the focus onto "Yes" and press "ENTER" button, then updating will start.



10) After complete updating all firmwares, the complete screen as follows.



11) Eject the USB flash drive and press "ENTER" button, then the display will reboot.

<Note> If fail updating, below screen appears.

